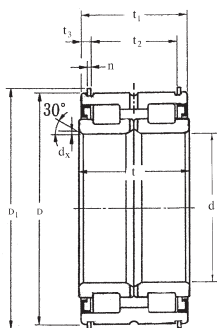


# Cylindrical Roller Bearings, Double Row SL04-5000 Series



Bearing Number	Dimensions (mm)									Basic Load Ratings (N)		Limiting Speeds (rev/min)	Weight kg
	d	D	t	d <sub>k</sub>	D <sub>1</sub>	t <sub>1</sub>	t <sub>2</sub>	t <sub>3</sub>	n	C <sub>r</sub>	C <sub>gr</sub>		
SL04-5008PP.2NR	40	68	38	0.8	71.8	37	27	4.5	2.5	7400	7400	2500	0.55
SL04-5009PP.2NR	45	75	40	0.8	78.8	39	29	4.5	2.5	8850	9250	2200	0.69
SL04-5010PP.2NR	50	80	40	0.8	83.8	39	29	4.5	2.5	9300	10000	2000	0.75
SL04-5011PP.2NR	55	90	46	1.0	94.8	45	34	5.5	3.0	11000	12200	1800	1.12
SL04-5012PP.2NR	60	95	46	1.0	99.8	45	34	5.5	3.0	11400	13100	1650	1.20
SL04-5013PP.2NR	65	100	46	1.0	104.8	45	34	5.5	3.0	11900	14100	1550	1.27
SL04-5014PP.2NR	70	110	54	1.0	114.5	53	40	5.5	4.0	15900	18000	1400	1.87
SL04-5015PP.2NR	75	115	54	1.0	119.5	53	40	5.5	4.0	18200	20600	1300	1.97
SL04-5016PP.2NR	80	125	60	1.0	129.5	59	46	5.5	4.0	19000	22200	1250	2.66
SL04-5017PP.2NR	85	130	60	1.0	134.5	59	46	5.5	4.0	19800	23800	1200	2.79
SL04-5018PP.2NR	90	140	67	1.5	146.0	66	51	6.0	4.0	28300	34500	1100	3.71
SL04-5019PP.2NR	95	145	67	1.5	151.0	66	51	6.0	4.0	28900	35500	1050	3.87
SL04-5020PP.2NR	100	150	67	1.5	156.0	66	51	6.0	4.0	30500	37000	1000	4.03
SL04-5022PP.2NR	110	170	80	1.8	176.0	79	62	7.0	4.0	35500	44000	900	6.55
SL04-5024PP.2NR	120	180	80	1.8	188.0	79	63	7.0	4.0	37000	47500	850	7.50
SL04-5026PP.2NR	130	200	95	1.8	208.0	94	75	8.5	4.0	50000	63500	750	10.50
SL04-5028PP.2NR	140	210	95	1.8	218.0	94	75	8.5	5.0	55500	71000	700	11.10
SL04-5030PP.2NR	150	225	100	2.0	233.0	99	77	9.0	5.0	64000	81500	650	13.30